

RIXIPRED® 4 TABLETS

Methylprednisolone 4 mg

"Targeted Corticosteroid Relief for Ortho Inflammation"

Marketed by: Human Orthocare

A Subsidiary of Human Biolife India Pvt. Ltd.

www.humanorthocare.com



Product Overview

Composition (per tablet)

Methylprednisolone – 4 mg

Key Ortho Relevance

- Potent corticosteroid with **anti-inflammatory & immunomodulatory effects**
- Relieves **pain, swelling & stiffness** in ortho conditions
- Suitable for **acute flare-ups & short-term management**
- Lower dose option for **milder cases**





Mechanism of Action

Methylprednisolone:



Inhibits phospholipase A2

↓ prostaglandins & leukotrienes



Suppresses inflammatory cytokines

reduces swelling & stiffness

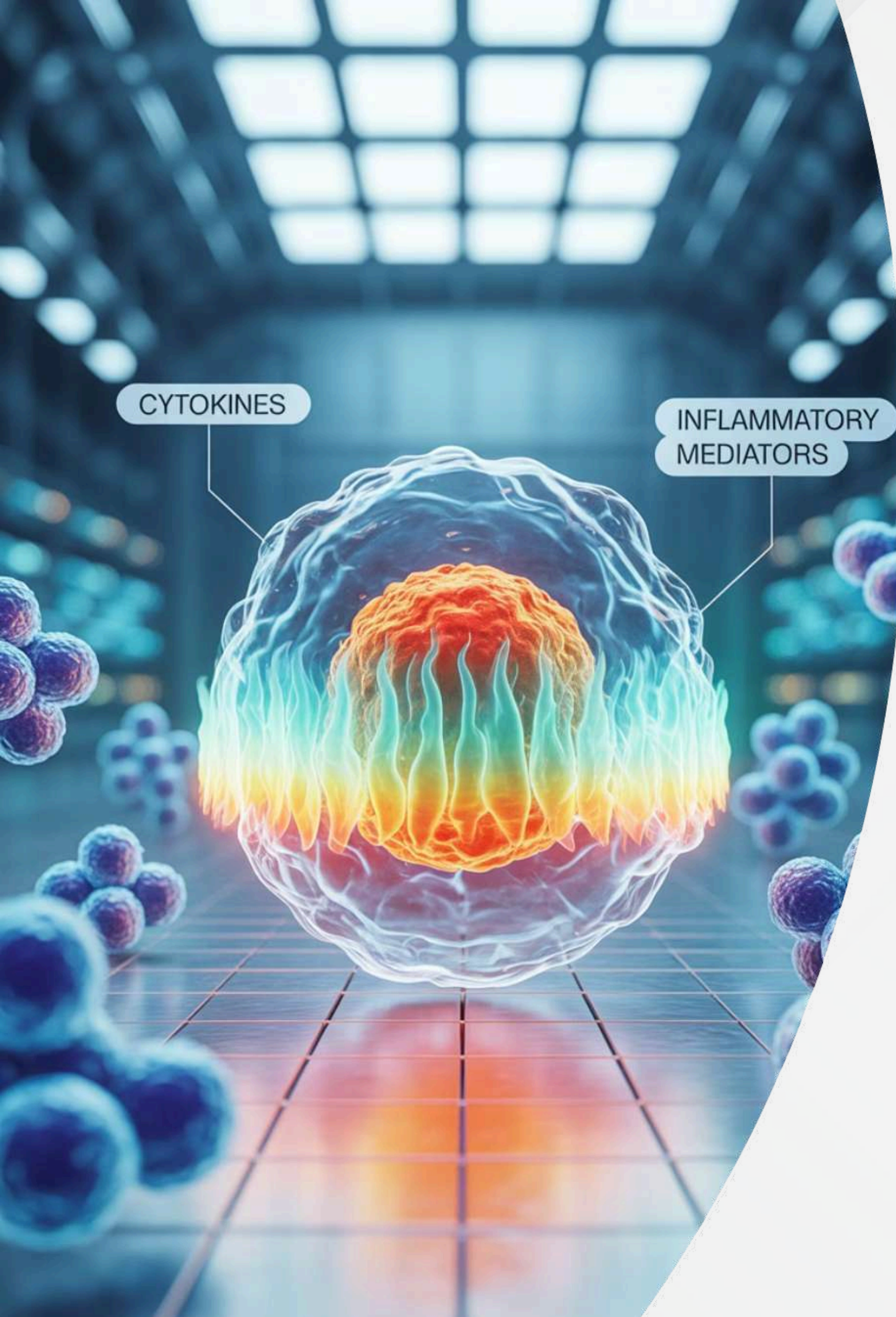


Modulates immune response

prevents tissue damage



Result → Rapid inflammation control & improved mobility



Indications (Ortho Focused)

Rixipred® 4 is recommended for:

Acute exacerbations of osteoarthritis & rheumatoid arthritis

Cervical & lumbar spondylosis with inflammation

Sciatica & radiculopathy (as adjuvant)

Post-traumatic & post-operative swelling

Soft tissue inflammation (tendinitis, bursitis)

Inflammatory musculoskeletal flare-ups

Clinical Advantages

Key Benefits of Rixipred® 4:



Potent anti-inflammatory action

Effective at low dose



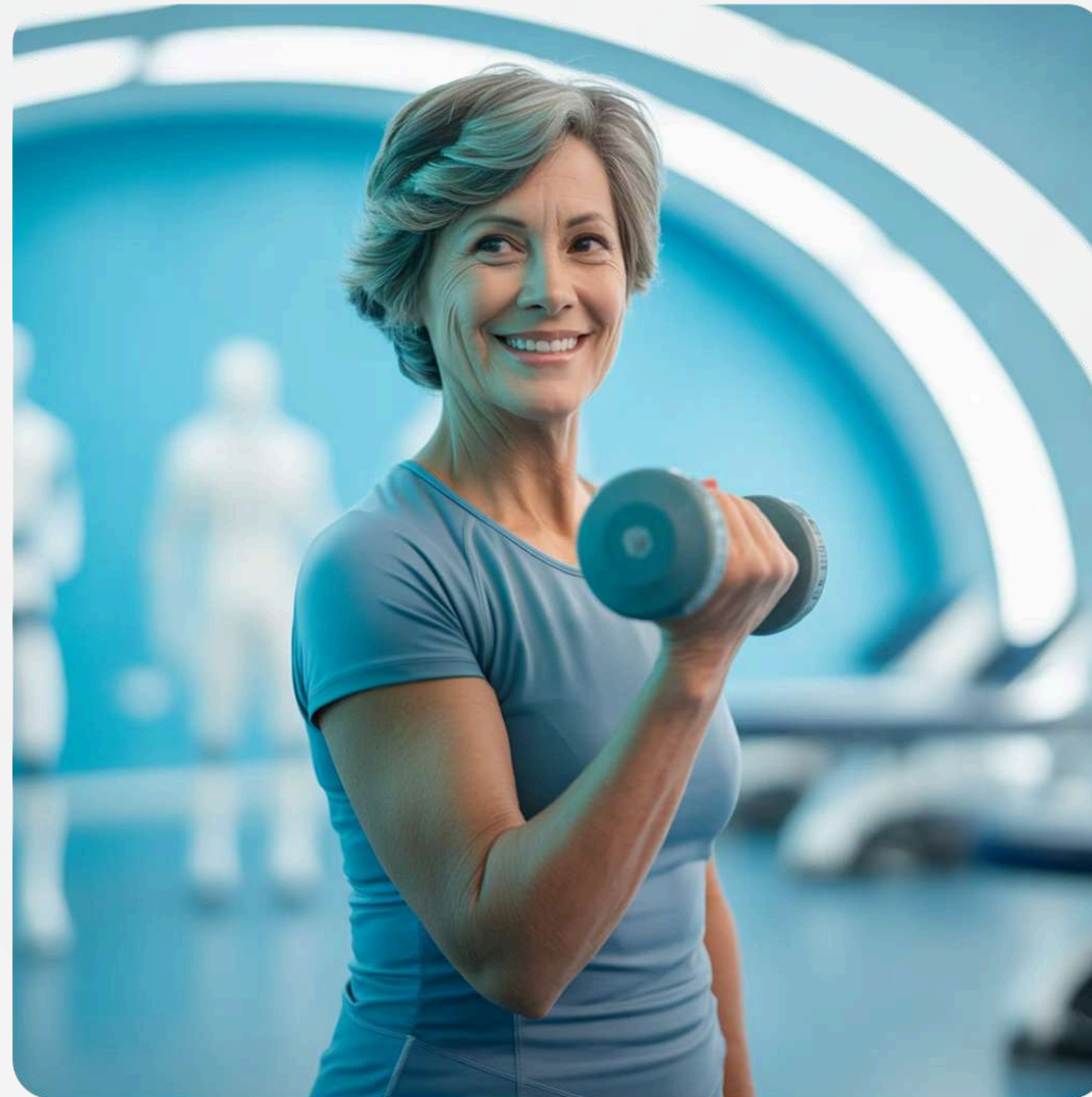
Rapid relief

In pain, swelling & stiffness



Short-term management

& bridging therapy



Enhanced Recovery

When NSAIDs alone are insufficient

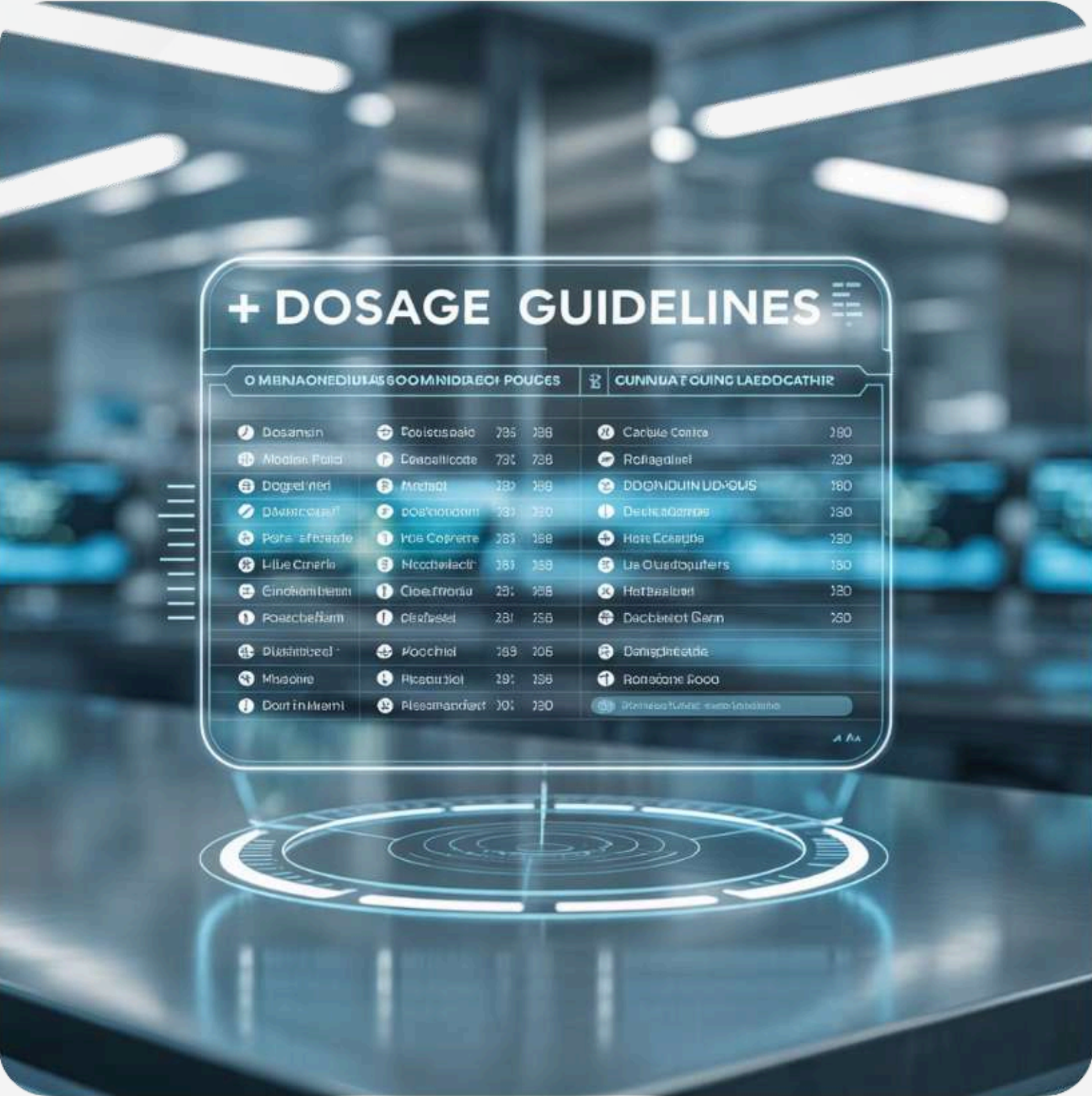
Rehabilitation Support

Post-trauma & surgical recovery

Comparison with NSAIDs

Parameter	Rixipred® 4 (Steroid)	NSAIDs
Anti-inflammatory	✓ Very Strong	✓ Strong
Analgesic Effect	✓ Yes (Indirect)	✓ Yes
Oedema Control	✓ Excellent	⚠ Moderate
Long-Term Use Safety	⚠ Needs caution	✓ Safer
Post-Op Swelling Relief	✓ Excellent	⚠ Limited

Dosage & Administration



1

Standard Dosage

4–8 mg daily (short-term), tapered as per condition

Use lowest effective dose for shortest duration

2

Tapering Protocol

⚠️ **Taper gradually** to avoid withdrawal

3

Special Populations

⚠️ **Adjust dose** in elderly & comorbid patients

⚠️ **Important:** Always follow prescribed dosing schedule and tapering guidelines

Safety & Tolerability

Possible Side Effects

(dose & duration dependent)

- Gastric irritation, mood changes, insomnia
- **Long-term use** → osteoporosis, hyperglycaemia, adrenal suppression

Contraindications

 **Systemic fungal infections**

 **Uncontrolled diabetes, hypertension**

(use with caution)

 **Hypersensitivity to corticosteroids**



Why Prescribe Rixipred® 4?

Doctor's Choice For:



Acute ortho inflammation

not controlled by NSAIDs alone



Short-term bridging therapy

in flare-ups



Post-traumatic & post-surgical

swelling management



Low-dose corticosteroid option

with rapid action



Trusted Quality

Backed by Human Orthocare



**Human
Ortho Care**

A SUBSIDIARY OF HUMAN BIOLIFE INDIA PVT. LTD.

Contact Us

Step into care that moves you forward.

Use with clinical discretion, especially in high-risk orthopedic conditions.

HumAn Orthocare – A Subsidiary of Human Biolife India Pvt. Ltd.

For medical queries or collaboration:



www.humanorthocare.com